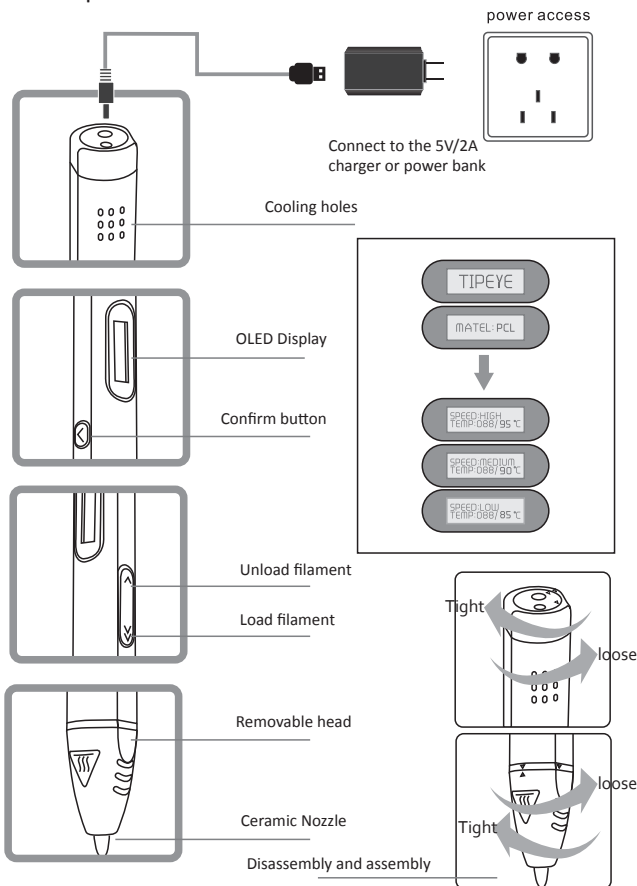
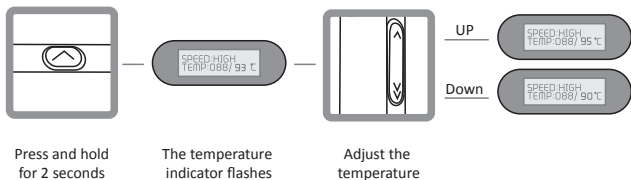


## Low temperature version



## Steps of adjusting the temperature



### Precautions



1. Product applicable age: 5 years old and above.
2. Please make sure the cut end of the product is even each time when you use it. When the filament is running out please also make sure the other end of the filament is even otherwise it will get stuck.
3. This product is a precision electronic product, the maximum working time is 3 hours, please do not use it more than 3 hours, so as to avoid damage to the pen and the motor.
4. Pay attention to the temperature of the nozzle, please do not touch the nozzle during use.
5. Please do not use the nib to touch other hard objects.
6. Please do not use foreign materials to load the hole of filament or the nib.
7. Please do not use other manufacturers' consumables, so as not to cause incompatibility.
8. This product is not waterproof.
9. Make sure that the filament is completely out of the pen and cut off the power supply after using.
10. Please put the pen in a place where children can not touch after using.

### 1. Package Contents

1. 1 x 3D printing pen    2. 1 x Power adapter    3. 1 x USB cable    4. 1 x Manual  
5. 1 x 16.4ft (5m) PCL filament    6. 1 x Pen holder

### 2. Operation Instructions

#### • Connecting the pen to the power supply

Connect the included 5V/2A adapter to the power supply or the included USB cable to 5V/2A mobile power supply. (Make sure that the current is 2A.)It enters into standby condition when the LED screen displays "TIPEYE".

#### • Mode Options

This device is only suitable for PCL filament mode,there is no need to change the filament.(Only suitable for PCL filament.Do not use ABS and PLA filament.)

#### • Drawing speed adjustment

When the temperature of the pen rises automatically to the default setting temperature, please make sure that the end of the filament is smooth, press the "«" button(load filament button) once and load the filament refill into the pen. (Please gently push the other end of the filament until it goes through the gear.) Double click the "«" button to start loading automatically.

#### • Confirming button "v"

In PCL mode, press the "v" button each time to change the filament loading speed (low: 80°C medium: 90°C high: 95°C)Users can choose the appropriate speed mode according to painting proficiency.

#### • Temperature adjustment

In any mode, long press the "v" button until the digital temperature indicator flashes,then press the "«" button to reduce the temperature or press the "»" button to increase the temperature.

#### • Unloading filament

After finishing drawing, press the "«" button once to stop loading, press the "»" button once to start unloading automatically, when the unloading progress is about to finish please pull the filament gently out of the pen. (The unloading progress must be finished at one time. If you press the "»" button mistakenly when you are using the pen please finish unloading the filament and then load new smooth cut filament once again. )

• This product will automatically cut off the power supply of the screen if it's not used for 3 minutes and enter into standby mode, please press the "«" button once to activate.

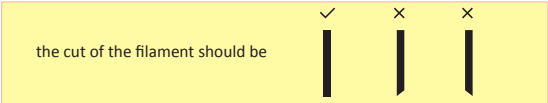
- After drawing please place the pen on the holder to avoid the heat of the pen damaging other objects.
- The temperature of the nib is low during the operation, the average temperature is around 20°C. Please note that the low temperature 3D printing pen cannot be used with ABS and PLA filament, otherwise it will damage the nib, motor and especially the product itself.

### 3. Troubleshooting

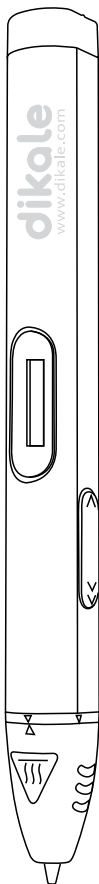
Phenomena	Causes	Troubleshooting Methods
The power indicator doesn't light	Mobile power fault	Check mobile power supply
	The lead wire of the socket falls off	Weld the socket lead wire
	Main board fault	Replace the main board
Filament do not come out off the nozzle	Nozzle blockage	Replace the heater nozzle
	Using of ABS and PLA filament to cause blockage	Replace the heater and nozzle and use PCL filament
	Temperature is not high enough	Replace the heater nozzle or adjust the using temperature
	No temperature	Replace the heater nozzle or replace the main board
	Gear can't bite the filament	Clean the gears and reload
	The tail of the filament is uneven and causes the filament to get stuck	Unload and take out the filament, cut the tip even and reload it into the pen
	The filament can't go in	Unload the filament and take out the filament, cut the tip even and reload it into the pen
	Poor contact of the heater nozzle	Reset the heater nozzle
	Motor damaged or lead wire breaks off	Replace motor or lead wire
	Program fault	Replace the main board
Indicator showing temperature rising without actual heating	Heater nozzle fault	Replace the heater nozzle
	Main board fault	Replace the main board
	Internal wire falls off	Weld the internal wire
Temperature is too high, burning the nozzle	Main board fault	Replace the main board
	Heater nozzle fault	Replace heater nozzle

#### Reminder:

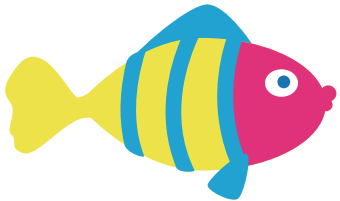
1. The rated voltage of this product is 5V/2A. If the voltage is 5V/2A -12V/2A, there will be an error while it will not burn the main board. If the voltage is more than 12V/2A, it will burn out the main board. Please do not use an adapter whose voltage is more than the rated voltage or adapters that are not safely certified by other manufacturers.
2. When using the product to connect to the mobile power supply, please ensure the electricity of the mobile supply is no less than 40%. Otherwise the filament will not come out because the current can not reach the full work requirement of 5V/2A.
3. This product is low temperature 3d printing pen and is only suitable for PCL filament. (Please do not use it with PLA and ABS filament. If you use these two filaments mistakenly, the filament will not come out and it will damage the pen and the motor. Please then replace the pen and the motor.) PCL filament is food grade material and it can be recycled when you are not satisfied with your paintings. It can be shaped freely by DIY after soaking under water above 40°C for 30 seconds.



3D



## 3D PEN OPERATION INSTRUCTION



1. using temperature of the 3d printing pen: 70-100°C.
  2. diameter: 1.75mm.(0.07 inch)
  3. environmental friendly and biodegradable .
  4. food grade, can be shaped freely after soaking it under water of temperature 40°C or above for 1 minute.
  5. It is about 30 seconds slower shaped than PLA, ABS after melting.
- Disadvantage: The price of PCL is 4 times more expensive than ABS and PLA.

1. using temperature of the 3d printing pen: 170-230°C.
2. diameter: 1.75mm.(0.07 inch)
3. odorless, environmental and biodegradable.
4. shaped fast under the normal temperature after melting.

1. using temperature of the 3d printing pen: 190-260°C.
2. diameter: 1.75mm.(0.07 inch)
3. shaped fast under the normal temperature of environment after melting disadvantages.
4. not environmental friendly, odorous, not suitable for kids.

**Safe**  
Temperature

## Aviation ceramics Nozzle

Lowest to **20°C**

No Scald  
Safe to use on the Skin



Saving, environmental protection, repeated use



WARRANTY CARD

Hope our sincere service can accompany your whole life

This is filled by the staff of this store

Date of purchase:

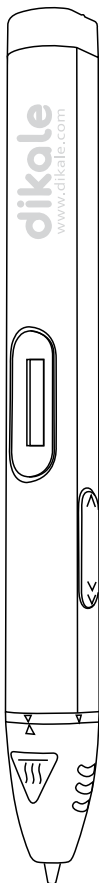
Customer Name		ID	
Address		Telephone Number	
Model of Purchase		Quantity	

Maintenance and service record

	Failure cause	Change Accessories	Time	Maintenance Personnel
First 1				
Second 2				
Third 3				

Customers who buy 3D printer pen can enjoy free maintenance and replacement of spare parts if there are quality problems in case of normal use, not including man-made damage.

3D



CE FCC RoHS    EAC